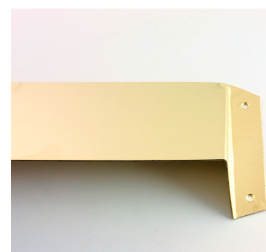
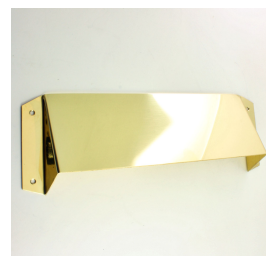
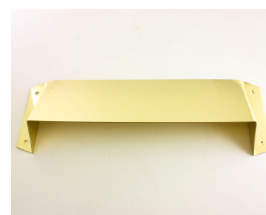


Letter Plate Internal Security Hood Cowl - Polished Brass Unlacquered

Product Images



Description

- Polished brass letter plate security hood.
- The security cowl is designed to fit on the inside of a front door on the reverse side of the letter plate.
- Designed to help prevent burglars from putting their hands through the door to open the Yale lock, night latch or Chubb lock.
- Also helps prevent people from fishing keys from near by tables and side units.
- Restricts the opening angle of the flap.
- Simple to fit simply screws to the back of the door.
- Measure your letter plate bolt fixing centres first, then order the security hood with an opening that is larger than this measurement.

- Larger and smaller sizes can be made to order, please contact us for lead times and prices.
- Supplied with stainless steel fixing screws.

Finish

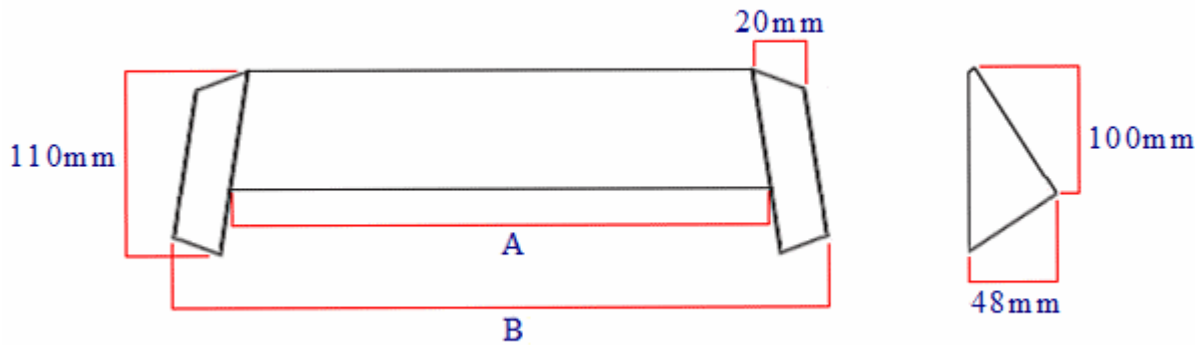
- Polished brass - (Unlacquered brass this item will need to be polished with brasso to keep it looking shiny).

Alternative Finishes Available

- Satin stainless steel.
- Polished stainless steel

Dimensions

- Available in two sizes



Item Code	Opening Width (A)	Overall Width (B)	Overall Height
40687.1	254mm	310mm	100mm
40687.2	305mm	360mm	100mm

Products in this set



40687.1 - Letter Plate Internal Security Hood Cowl - 254mm Opening Width (310mm x 100mm Overall) - Polished Brass Unlacquered



40687.2 - Letter Plate Internal Security Hood Cowl - 305mm Opening Width (360mm x 100mm Overall) - Polished Brass Unlacquered