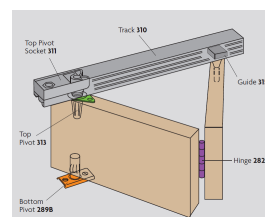
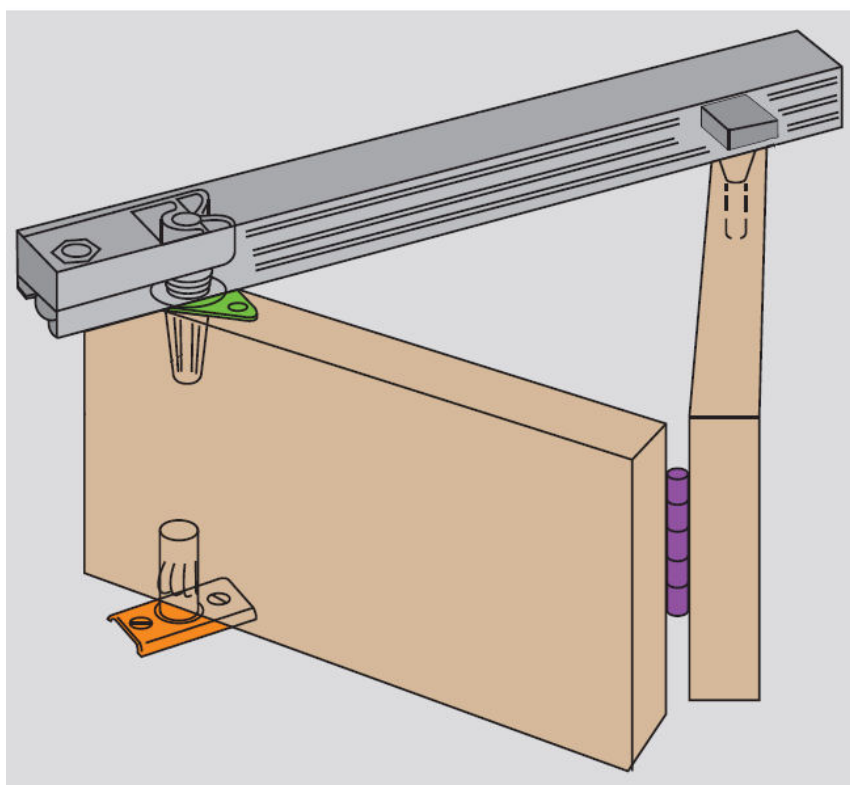


Bifold Door Gear System For Bi-Folding Wardrobe & Cupboard Doors Up To 35mm Thick & 14kg In Weight

Product Images



Description

- The Henderson Bi-fold range offers a stable, silent and smooth-opening folding systems for light weight folding wardrobe and cupboard doors.
- The Bifold can support a maximum leaf weight of 14kg and door thickness's of between 20-35mm. A range of kits are available to suit a maximum opening of 2134mm
- Silent and easy to fix - nylon spring-loaded guides with attractive aluminium top track
- Aluminium track provides a durable, long lasting finish. - No bottom track required.
- Kits contain an aluminium top track with fittings and spring loaded guides which complete this low maintenance system.
- Supplied with brass hinges as standard, alternative finishes can be purchased separately.

Kits Available To Suit Two Leaf Bi-Folding Door Systems

Two Door System

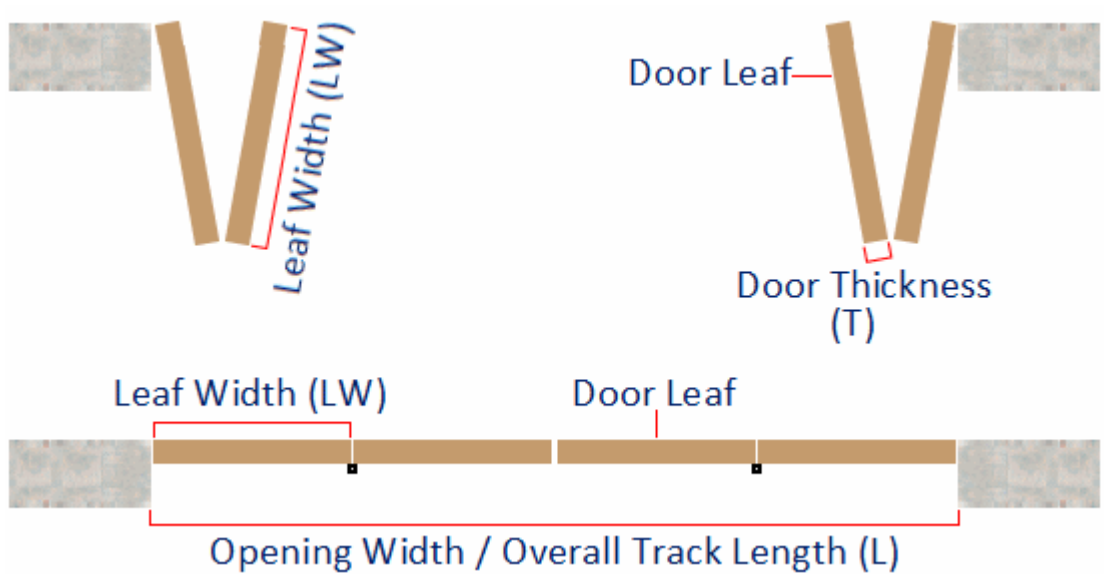


Kits Available To Suit Four Door Bi-Folding Door Systems

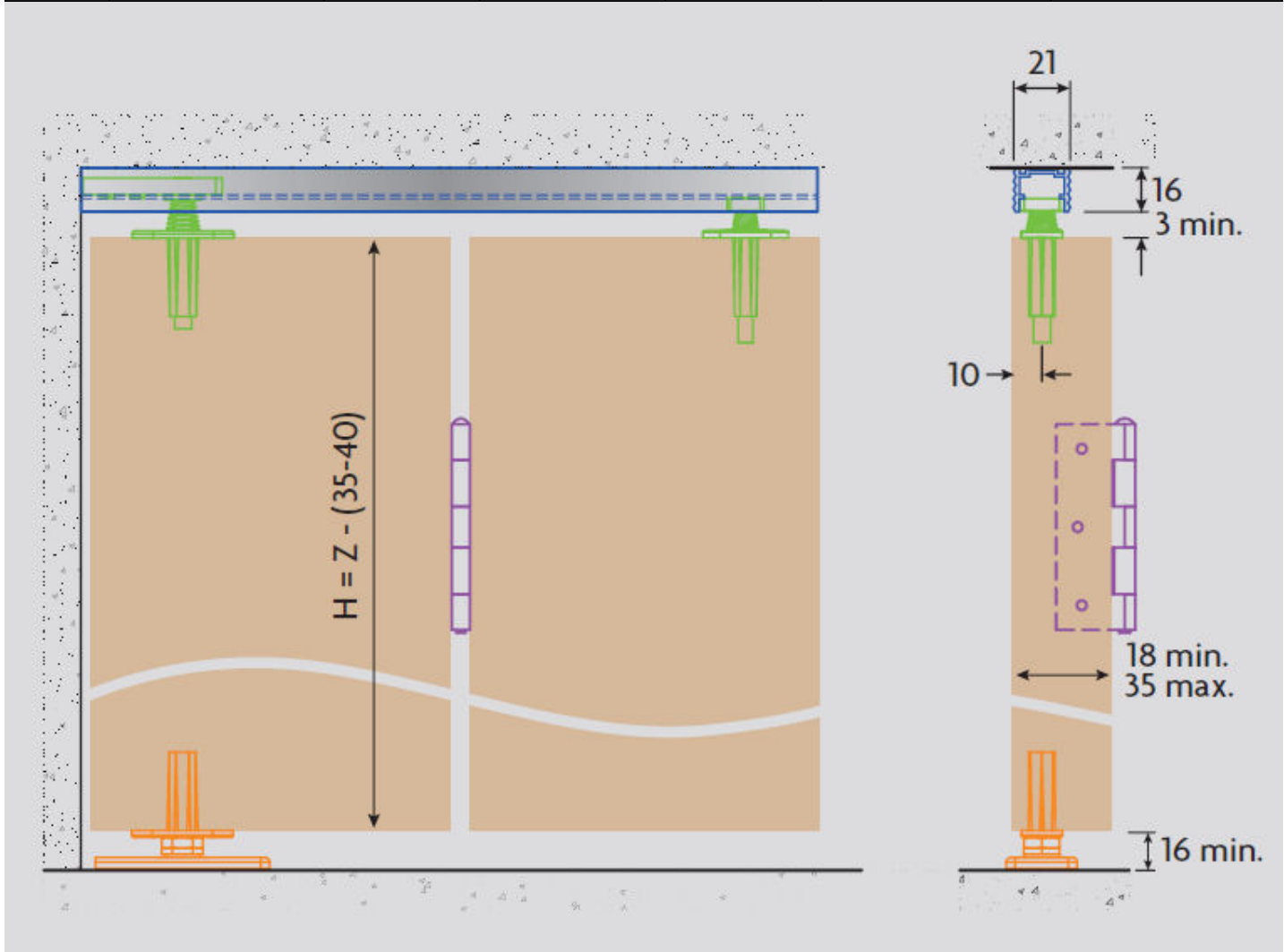
Double Set Of Folding Doors



Track Lengths Available

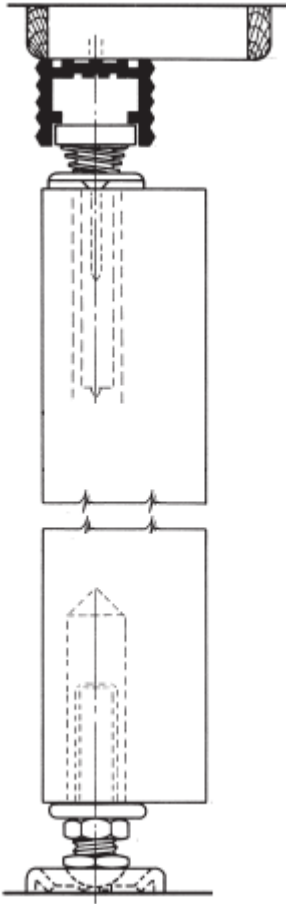


Item Code	Overall Track Length (L)	To Suit No. Of Door Leafs	Max Leaf Width (LW)	Max Door Weight	Min Door Thickness (T)	Max Door Thickness (T)
31277.1	1067mm	2	530mm	14kg	18mm	35mm
31277.2	1500mm	4	381mm	14kg	18mm	35mm
31277.3	2134mm	4	530mm	14kg	18mm	35mm



Fixing Options

- Designed to be ceiling / soffit mounted.



Items Included Within The Henderson Bi-Folding Door Kit

- Top track
- Top pivot sockets
- Top pivots
- Guides
- Brass hinges
- Adjustable bottom pivot assembly

Products in this set



31277.1 - BiFold Door Gear For Cupboards - For Door Leafs Up to 530mm Wide - 1067mm Track Length - 2 Leafs



31277.2 - BiFold Door Gear For Cupboards - For Door Leafs Up to 381mm Wide - 1500mm Track Length - 4 Leafs



31277.3 - BiFold Door Gear For Cupboards - For Door Leafs Up to 530mm Wide - 2134mm Track Length - 4 Leafs