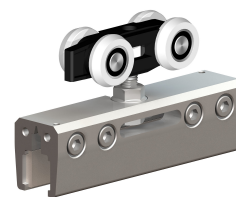
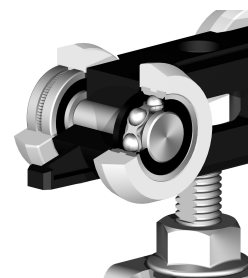
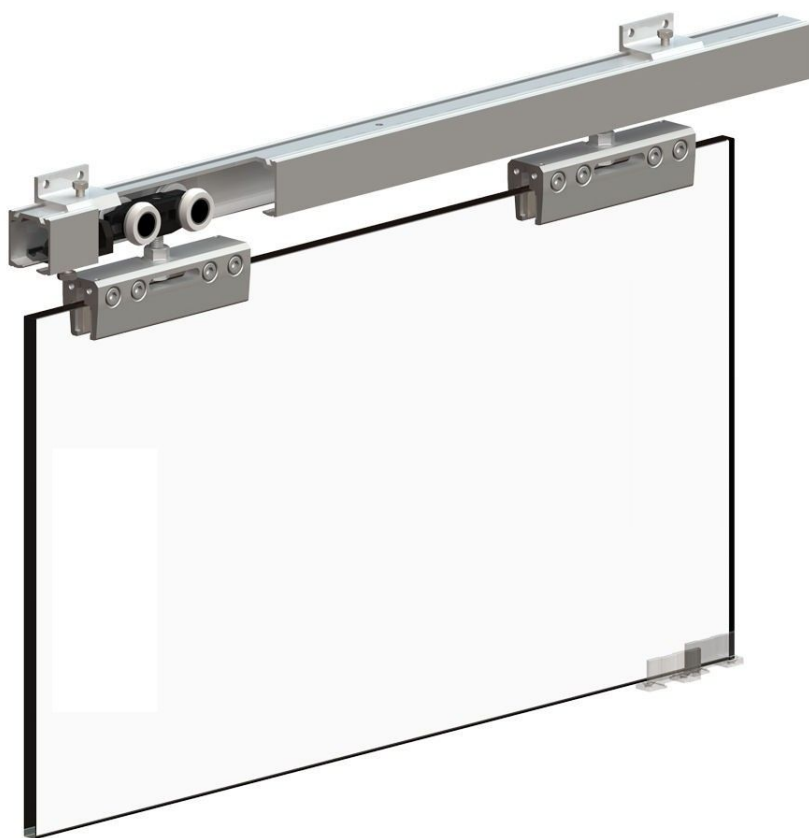


## Sliding Door Gear System For 8-12mm Thick Glass Doors Up to 100kg In Weight

### Product Images



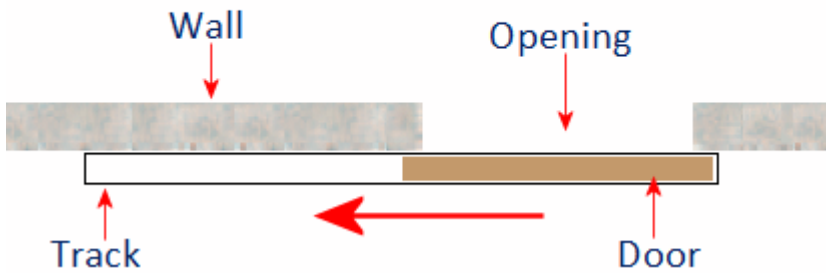
### Description

- The Glass sliding door system is designed for use on 8-12mm thick glass doors up to 100kg in weight.
- Suitable for use for glass sliding doors between rooms, wall openings or for entrances.
- Small one-piece glass clamp has unique design and is extremely easy to fit and adjust. The clamps have settings for 8, 10 and 12mm door thickness and includes self adhesive spacers.
- No need to cut or drill the glass, saving time and making installation much easier.
- Each set includes all the main components needed to install a long lasting, smooth running glass sliding door.
- Aluminium pre-drilled track for a durable, long lasting finish and easy installation. Track can be soffit / ceiling or wall mounted (wall brackets included).

- Hangers feature high quality ball bearing rollers for smooth and quiet running.
- Anti-jump system means wheels will always run smooth.
- Clear polycarbonate bottom guide - virtually invisible when installed.

## Single Sliding Doors

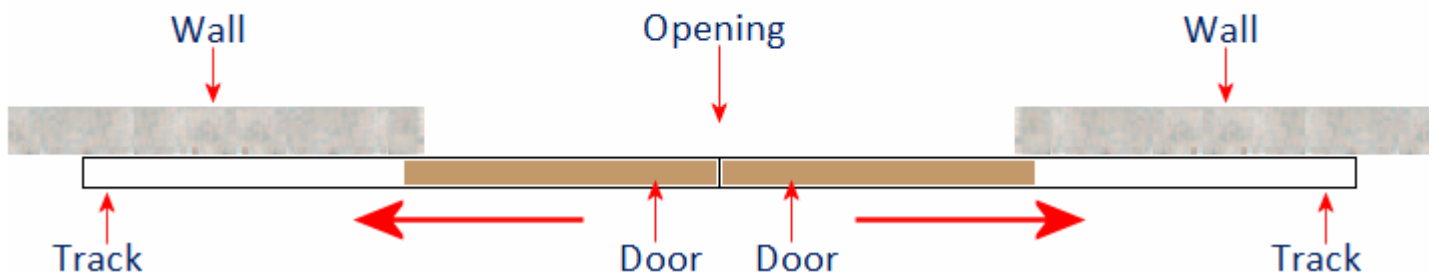
### Single Sliding Door



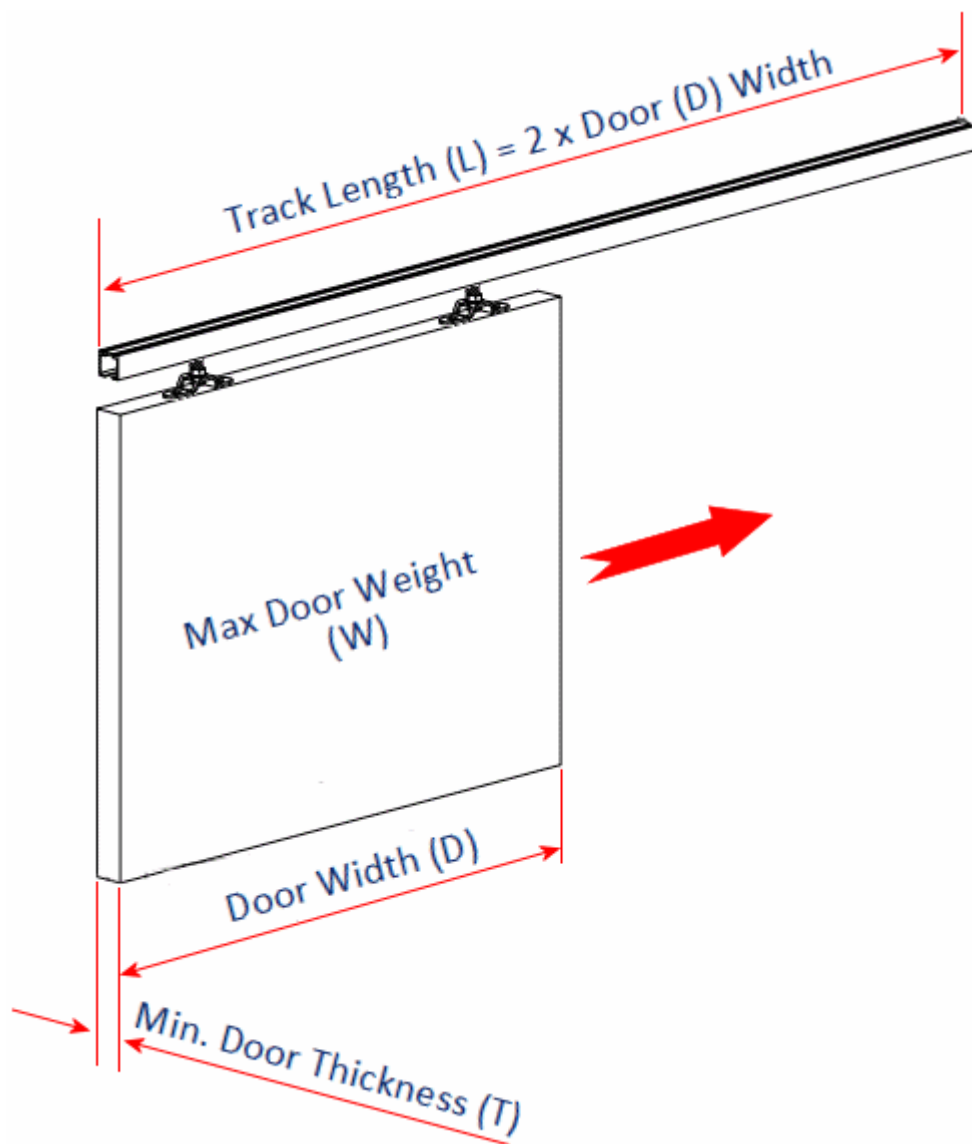
## Double Bi-Parting Doors

- Two kits can be fitted "end on" (next to each other) to allow for double doors.

### Sliding Double Doors

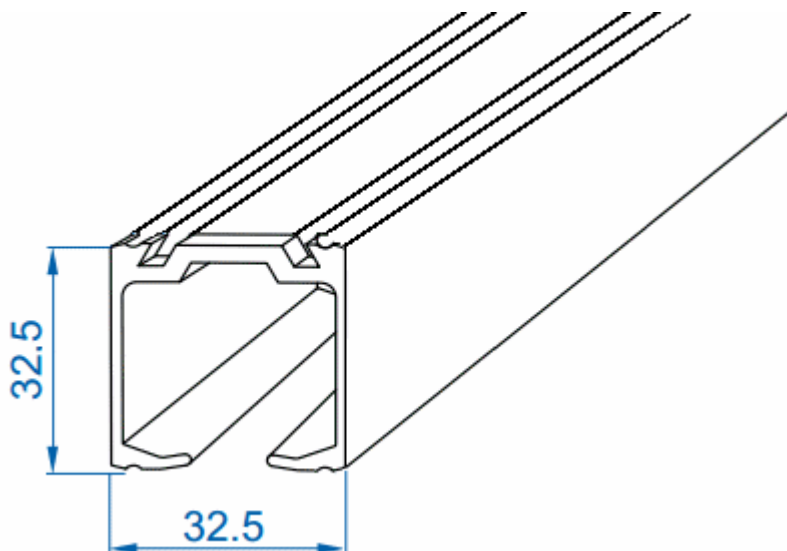


## Dimensions And Track Lengths Available



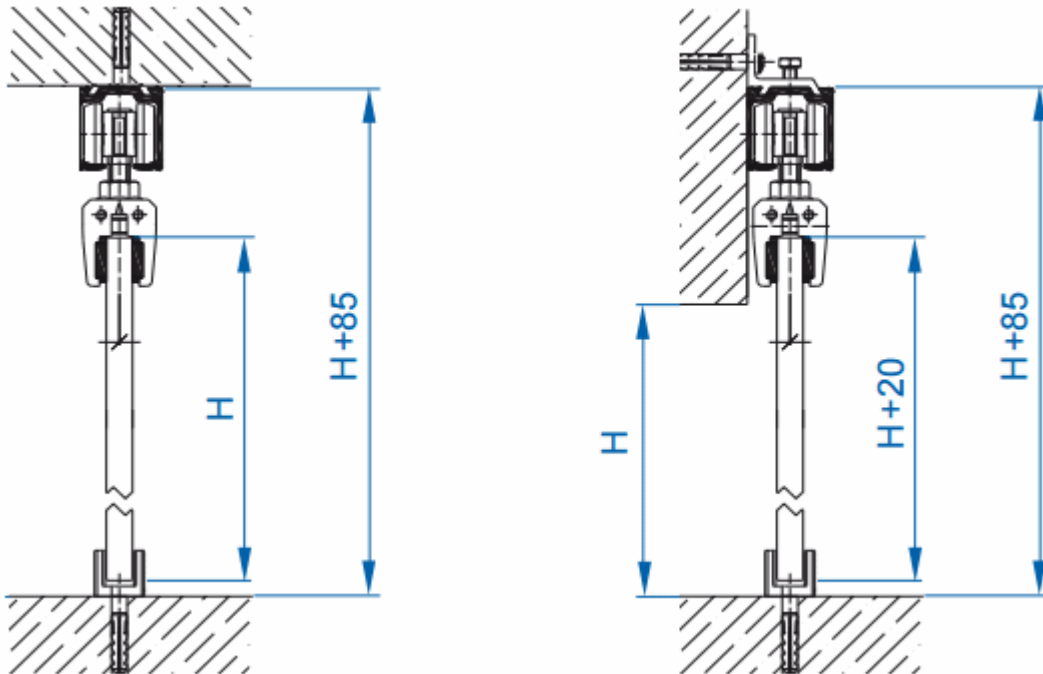
Item Code	Maximum Width Door (D)	Overall Track Length (L)	Maximum Door Weight (W)	Glass Door Thickness (T)
31278.1	1040mm	2000mm	100kg	8mm - 12mm

## Track Dimensions



## Fixing Options

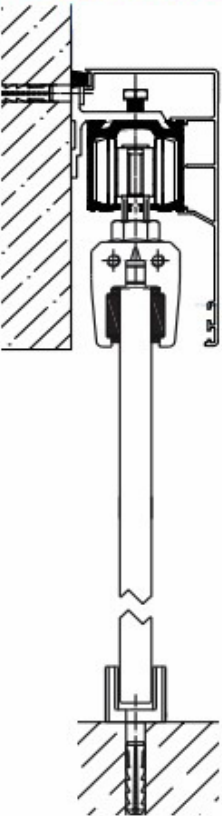
- Designed for ceiling / soffit mounting as standard
- Supplied with wall mounting brackets to allow the track to be face fixed to the wall (included within the pack).



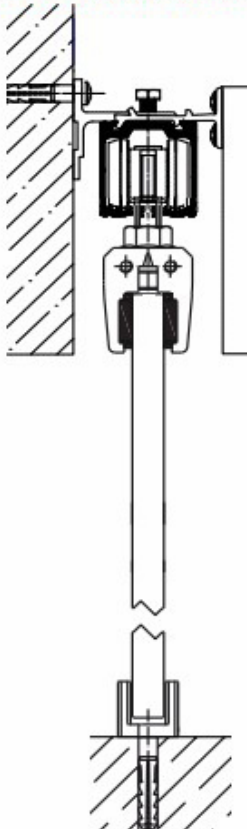
## Clip On Pelmet Options

- Clip on wrap around aluminium pelmet for use with wall mounted tracks - **Product 40869**.
- Clip on bracket which allows for a custom made wooden pelmet to be fitted - **Product 40865**.
- 2 x clip aluminium pelmets used in conjunction with spacers for use when ceiling mounting the track - **Product 40702**.

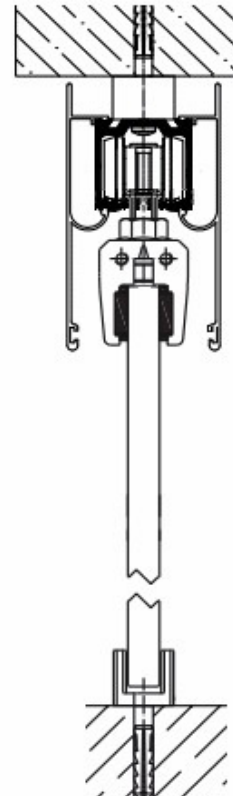
Aluminium Pelmet  
For Wall Mounted Track



Bracket For Attaching Custom Wooden Pelmet  
For Wall Mounted Track

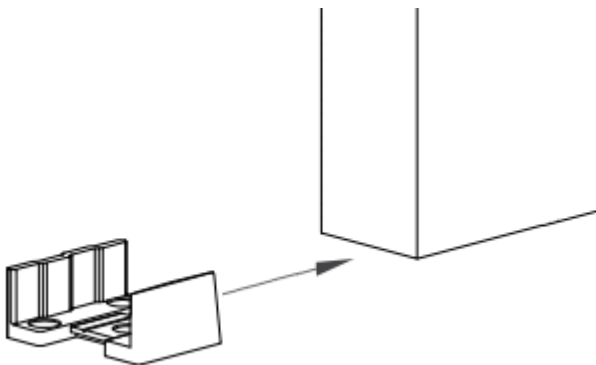


Aluminium Pelmet  
For Ceiling Mounted Track



## Floor Guide

- The Glass sliding door kit comes complete with a universal floor guide, fixed to the floor next to the door frame, this helps to guide the door insuring it runs straight.



## Items Included Within The Glass Sliding Door Kit

- 1x Pre-drilled aluminium track
- 2x Glass clamps
- 2x Ball bearing roller carriages
- 2x Buffer door stoppers
- 1x Universal floor guide

## Product Video

Products in this set

---



31278.1 - Glass Sliding Door Gear System For 8-12mm Thick Glass Doors Up to 1040mm Wide - 2000mm Track Length